

# Retail



White  
Grey  
Black

(Ra)

>80



2700K  
3000K  
3500K  
4000K  
5000K



15°  
24°  
38°  
60°



Max 20W



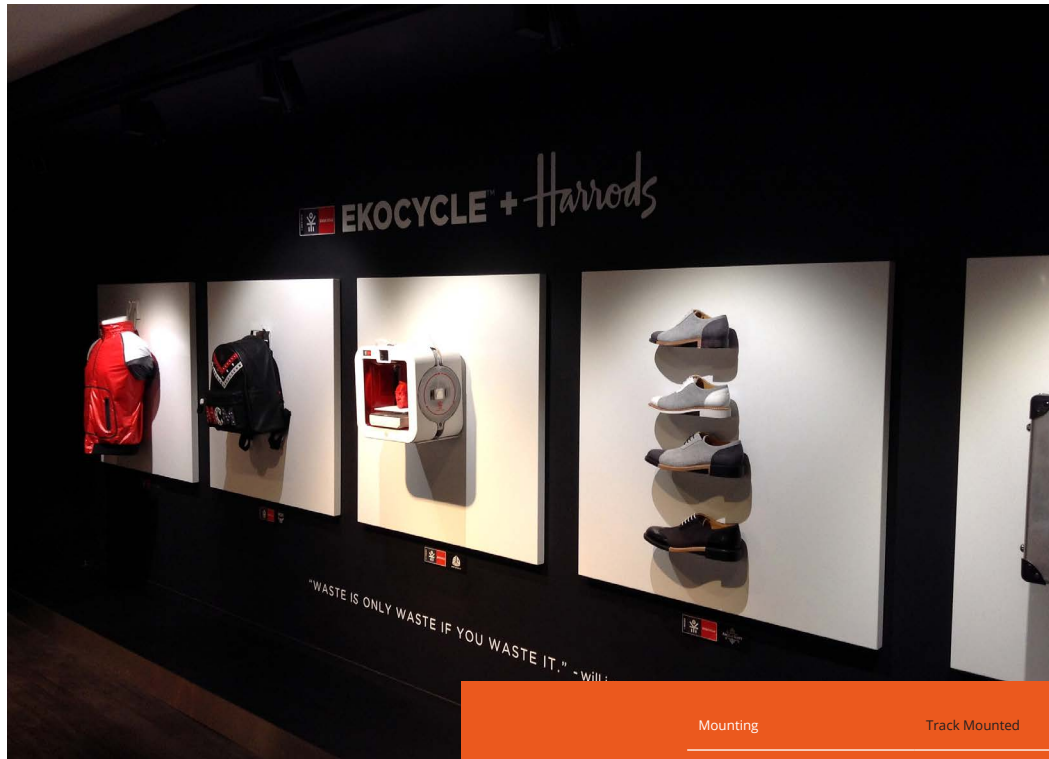
Max 2000lm

Dimensions  
(Ø x H)

Ø 70 x  
180mm



0.5Kg



Mounting	Track Mounted
Optical System	Reflector
Light Distribution	Direct
Driver	Electronic Control Gear
Materials	Housing: Aluminium
Surface Finish	Painted
Service Lifetime	50,000 Hours
Ambient Temperature	0°C / +25°C
EEC	A++A+/A

## TITAN MINI D

For retail spaces where ceiling heights are limited, the Titan Mini D offers great performance from a compact spotlight. For use with Global 3-circuit lighting track, Titan Mini D offers light outputs up to 2000 lumens with 4 differing beam angle reflectors. Combined with colour rendering of CRI90+, Titan Mini D is a useful addition to the Titan family.



**Shoplight**

Expert providers of lighting solutions for retailers