

# Retail



White  
Grey  
Black

(Ra)

>80  
>90



2500K  
2700K  
3000K  
3500K  
4000K  
5000K



15°  
30°  
45°



Max 30W



Max 4420lm

Dimensions  
(L x Ø x H)

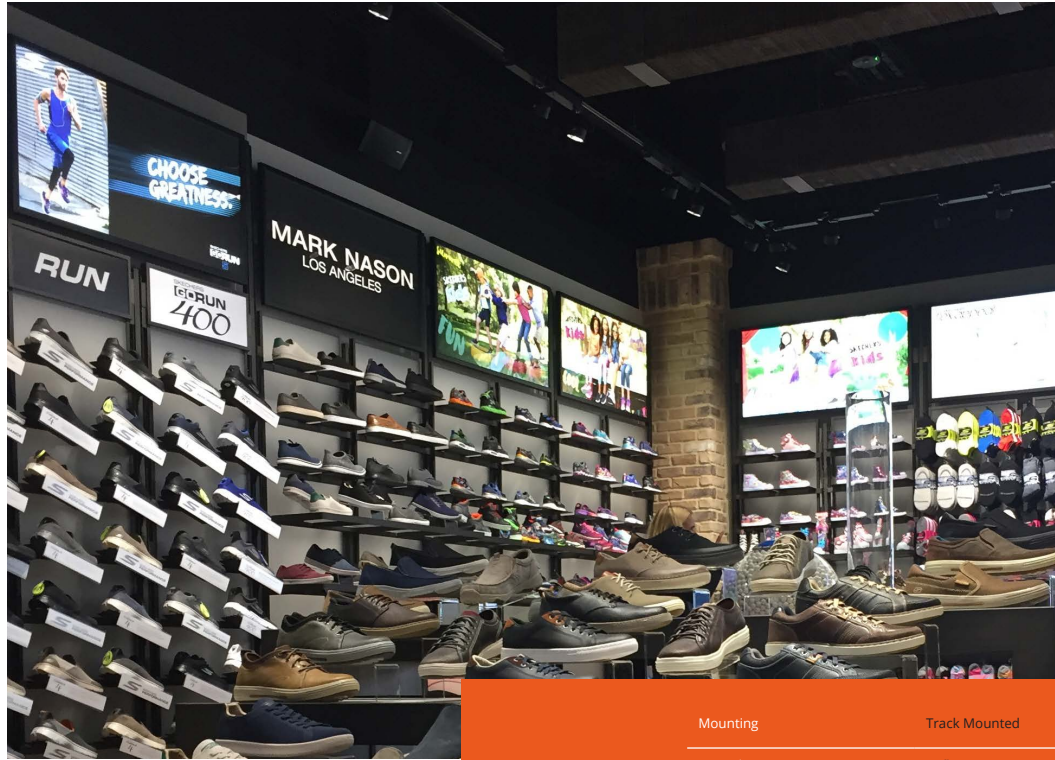
170 x Ø 95 x  
235mm



1.50Kg



Glass  
Opal  
Frosted



Mounting	Track Mounted
Optical System	Reflector
Light Distribution	Direct
Driver	Electronic Control Gear
Materials	Housing: Aluminium
Surface Finish	Painted
Service Lifetime	50,000 Hours
Ambient Temperature	0°C / +25°C
EEC	A++A+A

## TITAN N

Titan N is the complete track spotlight, for use with Global 3-circuit lighting track and offering light outputs up to 4420 lumens, Titan N combines visually-clean aesthetics with a huge variety of choice. With CRI 80 or 90 options, colour temperatures from 2500K to 5000K and 3 different beam angle reflectors, Titan N is an outstanding product fit to grace any retail store.



**Shoplight**

Expert providers of lighting solutions for retailers