

Retail



White
(RAL9003)
Other RAL
colours on
request

(Ra)

>80



3000K
4000K



LSMW
LSDE
LSDA
LSCO



Max 77W



Max 10600lm

Dimensions
(L x W x H)

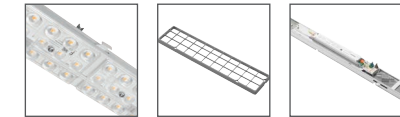
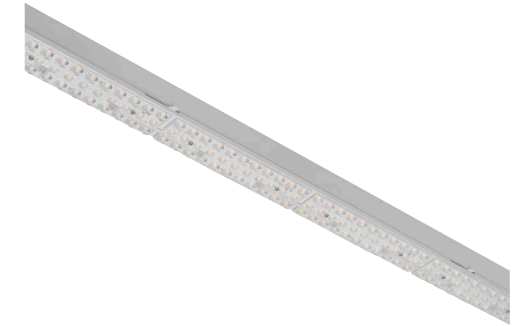
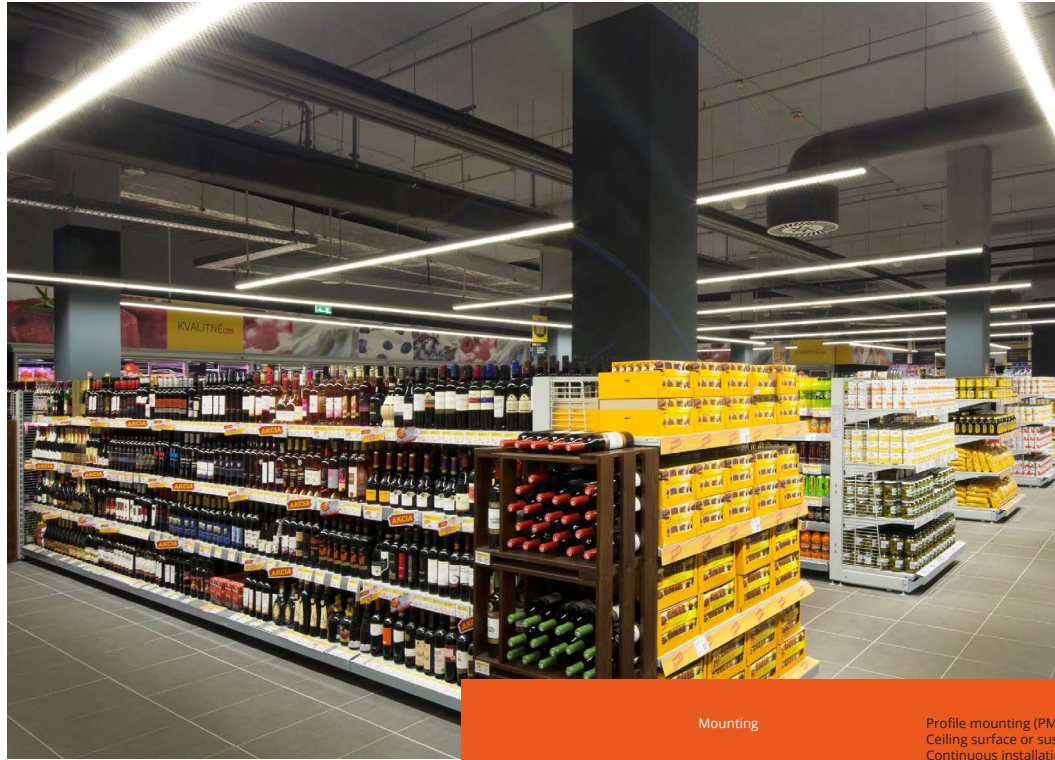
1482 x 63 x
69mm



2.60kg

Options

Antiglare grids
for LSMW &
LSDE



Mounting

Profile mounting (PM) - Smart-L System
Ceiling surface or suspended
Continuous installation

Optical System

LSMW (Medium Wide 91°/88°)
LSDE (Deep 56°)
LSDA (Double asymmetric 74°/134°)
LSCO (Corridor 90°/45°)

Light Distribution

Direct

Driver

Electronic Control Gear (Fix/DALI/EM 3H)

Materials

Housing: sheet steel, Lenses: PMMA

Surface Finish

Painted

Service Lifetime

50,000 Hours / L80 B20 @ 35-40°C
50,000 Hours / L80 B10 @ 30°C

Ambient Temperature

-20°C / +35°C

EEC

A++/A+

SUN-L

It couldn't be easier to provide large-scale general illumination than with this innovative rail-mounted luminaire. Combination of its exceptional market-leading efficacies, high performance LED lens optics and full controllability makes it a perfect line solution.



Shoplight

Expert providers of lighting solutions for retailers