

Retail



White
Grey
Black

(Ra)

>80
>90



3000K
4000K



40°



Max 45W



Max 5600lm

Dimensions
(Ø x H)

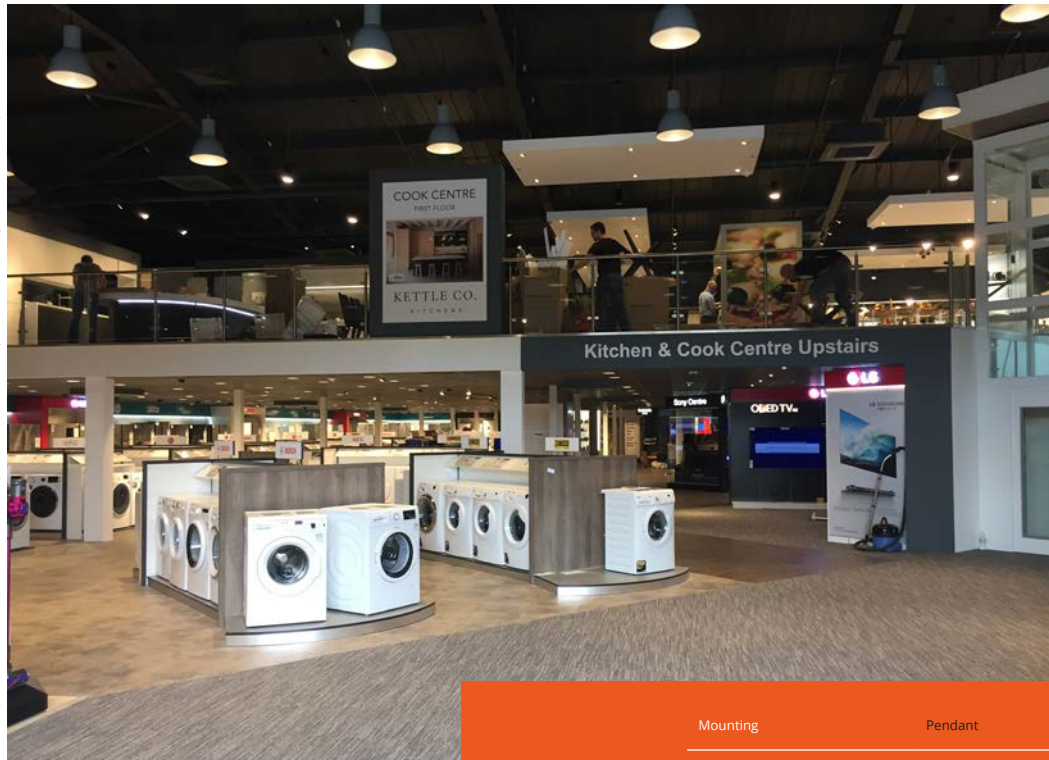
Ø315/325/410
x 369mm

Options

Max 3000mm
suspension



3.20Kg



| | |
|---------------------|------------------------------|
| Mounting | Pendant |
| Optical System | Clear Or Aluminium Reflector |
| Light Distribution | Direct |
| Driver | Electronic Control Gear |
| Materials | Housing: Aluminium |
| Surface Finish | Painted |
| Service Lifetime | 50,000 Hours/L80B20 |
| Ambient Temperature | 0°C / +35°C |
| EEC | A++A+A |

GIANT

For retail spaces that require large-scale, effective luminaires, the Giant provides lumen packages up to 5600 lumens from a fixture that is available in upto 410mm diameters. Available in 3 colours, LED modules delivering colour rendering of Ra 80+ or 90+ and available in 3000K or 4000K colour temperatures, Giant delivers scale and performance wherever you need it.



Shoplight

Expert providers of lighting solutions for retailers